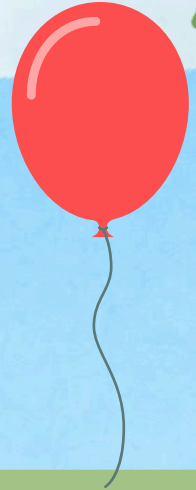


The Sensory Hive

NEWSLETTER
NOVEMBER 2024



Check out what we
have been up to this
term!

Mindfulness
Moment Inside



Parent
& Carer
Coffee
Morning





ABOUT The Sensory Hive



Who is behind 'The Sensory Hive'?

The Barking Muslim Association which administers the Al Madina Mosque is a Multi-Award-winning charity which has been operating in the third sector for over 30 years. Al Madina has a reputable community centre known as 'The Hive', which has been serving the community successfully. The SEND service called 'The Sensory Hive' sits under 'The Hive' which has partnered with Ben Green and Joyce Adekoya to design, develop and run the service to date.

What services do we offer?

The service we offer is a range of programmes and interventions designed to help children and young people with neuro diverse conditions between the ages of 3-25 years. The Sensory Hive aims to promote community cohesion and reduce stigma within Barking & Dagenham and the surrounding borough's in relation to SEND.

The 3 main areas of support are:

- Short breaks
- Interventions
- Bespoke sessions.

Meet the team



Joyce Adekoya

Sensory Hive Management



Ben Green

Sensory Hive Management



Rebecca Green

Sensory Hive Supervisor/ Parent Liaison



Aaliya Mendoza

SEND Specialist Worker & Student Liaison



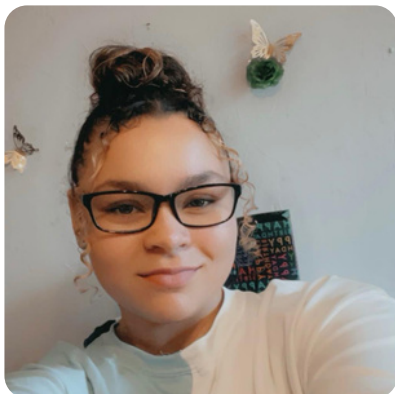
Vivian Agyeman

SEND Specialist Worker & Parent Liaison



Michelle Jones

Trainee SEND Specialist Worker - Resources & Content Creator



Aleesha Pogmore

Trainee SEND Specialist Worker - Intervention Support & Development



Ashfaq Siddique
Secretary to BMA's board of trustees



The Sensory Hive aims to provide much needed support services for sections of our communities who are sometimes neglected, not heard or just ignored.

Our services aim to raise awareness, improve access to resources, breakdown barriers and provide bespoke high-quality interventions which enhance individual like skills and improve quality of life.

What sets us apart is that we come at this from a community focussed perspective – it is a service for our communities by members of our communities.

Our staff and management team encompass a mix of volunteers and paid professionals as well as community support staff – we are a mixed bag from diverse backgrounds who share a passion to serve humanity.

We are humbled that people entrust us with their loved ones and we aim to reflect a similar love to those we serve.



The Sensory Hive

Meet Our Sensory Hive Team Houses!

Each child has the opportunity to achieve points for their houses. At the end of each term certificates and rewards will be awarded!



**Roaring
Lion
House**



**Cheeky
Monkey
House**



**Goofy
Giraffe
House**



**Elegant
Elephant
House**



Certificates

AWARDED TO CHILDREN THIS TERM

BH

**Excellent
improvement
with
emotional
regulation!**

MA

**Great
engagement
with
peers &
staff!**

MAR

**Fantastic
advance
engagement
in
interventions!**

MA

**Good
improvements
with
emotional
regulation!**

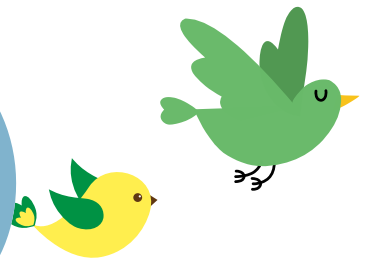
WB

**Always
having
a positive
attitude to
learning!**

AA

**Most
improved
with motor
skills & social
interaction!**

Parent Testimonials



My child loves his time at the Sensory Hive because it's fun, welcoming and a safe setting with loving staff, where he can relax and enjoy himself with friends.



My son has been attending Sensory Hive for nearly two years now, and I can't say enough good things about this wonderful club. From the moment he started, it's been clear how much he enjoys his time there. As soon as I mention he's going, his face lights up with excitement!



Past Community Events

At the Sensory Hive we have previously hosted SEND events for families within the community to access. Here are some pictures of events we have hosted.

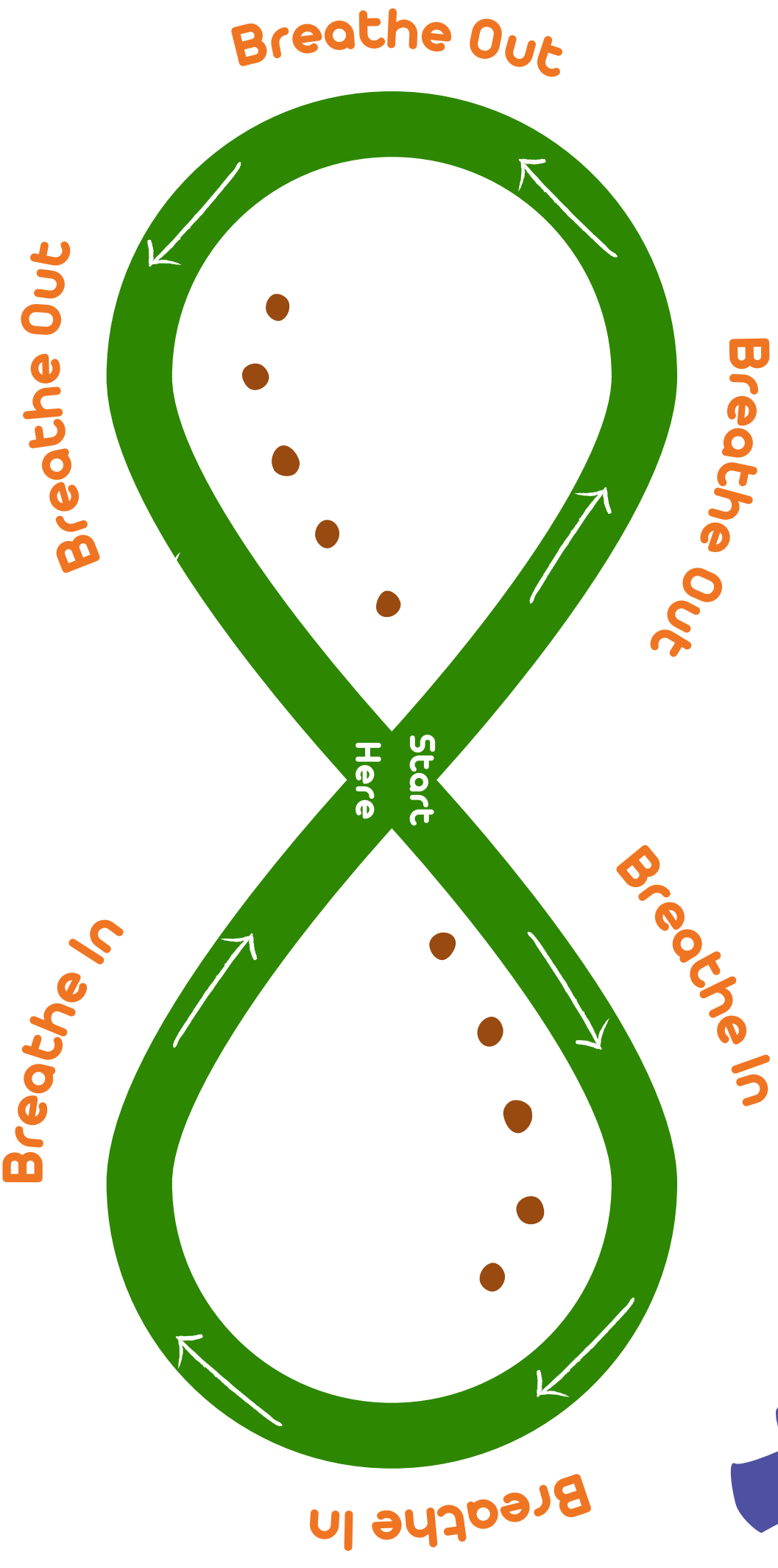
Puppy Therapy



Soft Animal Experience



Figure 8 Breathing



Slowly trace the figure 8 with your finger or eyes
Follow the breathing signs & arrows as you trace



CALLING ALL PARENTS & CARERS!

We recognise the fantastic work parents and carers do, and we want to offer additional support to parents, carers and families. Sensory Hive is proud to announce the newly launch tea & coffee mornings for parents/carers.


WHEN

First morning will commence at 10am on November 30th.
We aim to run tea & coffee mornings once a month.
To book your place, please send us a email.
sensoryhive@barkingmosque.org.uk

IT'S AN OPPORTUNITY FOR:

SEND parents/carers to network and establish support groups

- * Share and educate parents on SEND strategies
- * Time for fun & great engagement
- * Safe circle time
- * SEND topic discussions
- * Activities for SEND parents
- * Advice & drop in's for SEND parents/carers



Parent
& Carer
Coffee
Morning





Making a referral

If you would like to join the Sensory Hive or know a child and family that would benefit from our service please send us an email

 sensoryhive@barkingmosque.org.uk

We take referrals directly from local authority and also take direct referrals from parents if you are in receipt of direct payments.

On occasions we accept privately funded referrals but this will need to be discussed with our management team.



Additional information



Closures

Please note the centre is closed on
21st & 28th December



Our last session will be the community event:
14th December 2024 (11:30-13:30)

We will resume back on
4th January 2025

